

### Dispose of strapping properly

Always place used strapping in a container designated for disposal or recycling. Or use a strap chopper (a device that is specially designed for strapping disposal). Never reuse strapping.



## General Hand Tool and Strapping Safety



**Safety is  
Everyone's Job**

#### Samuel Strapping Systems

In Canada call Toronto  
Tel: (905) 279-9580  
Fax: (905) 279-8016

In the U.S.A. call  
1-800-222-1855  
Fax: (614) 864-3708

In the U.K. call  
Tel: 1709-587123  
Fax: 1709-584146

For other locations in Canada  
call 1-800-607-8727

### **Samuel cares about your safety.**

To ensure operator safety, it's important that all personnel use proper tool and strap handling procedures. This safety booklet is aimed at educating operators on the safe, efficient use of Samuel tools and strapping. All personnel must read this booklet prior to using any Samuel product. Failure to follow any of the recommendations in this pamphlet could result in severe personal injury.

It's also important that employers assess, evaluate and train employees on any additional safety measures that may be required for their operation. Employers should also make copies of this Samuel safety booklet available to all employees who work with or around Samuel tools and strapping. Additional copies of this booklet may be obtained from your Samuel Sales Representative.

### **Always use the proper strapping and seals**

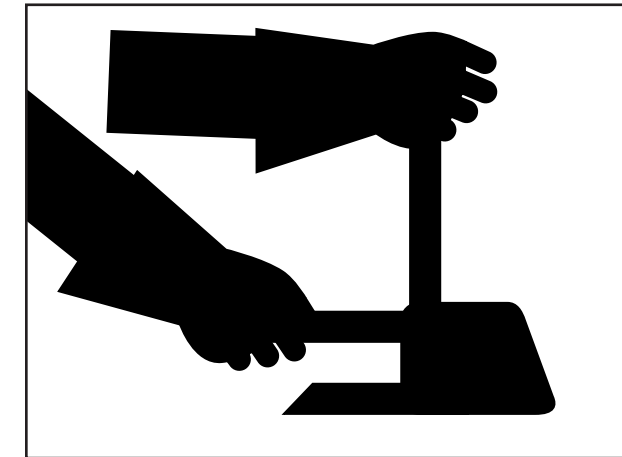
Use of strapping, seals or replacement parts not manufactured or specified by Samuel may result in strap breakage or joint separation while applying strapping to a load or during normal shipping and handling. This could result in severe personal injury. Remember, safety is everyone's job.

### **Read the manual and all safety instructions**

Before operating the tool, read and understand all safety, operation and maintenance information provided in the tool's manual (packaged with the tool). If you do not have a manual, or need extra copies, contact your Samuel Sales Representative. Also, read and understand all safety information on the tool itself.

### **Avoid loose clothing & jewellery**

Shirt sleeves must be buttoned or rolled up tightly and shirt tails tucked in to prevent them from being caught in the hand tool. Avoid wearing rings and other jewellery that could become caught in moving parts.



### **Maintain proper position**

Establish proper footing, balance and position to prevent injury resulting from loss of balance.



### **Keep the floor uncluttered**

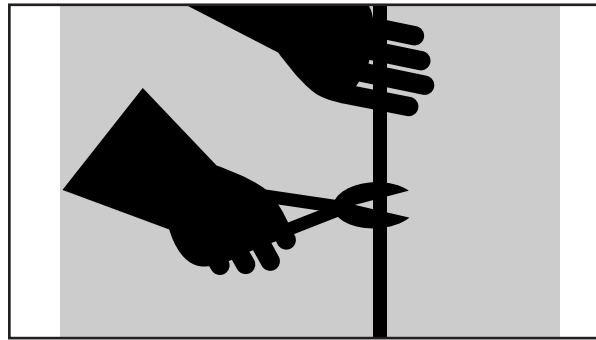
Clear your working area of loose strapping. Broken or used strapping can create a safety hazard.



### Cut strapping carefully

When cutting\* vertically tensioned strapping, stand to one side, hold the strapping against the package and cut below the hold.

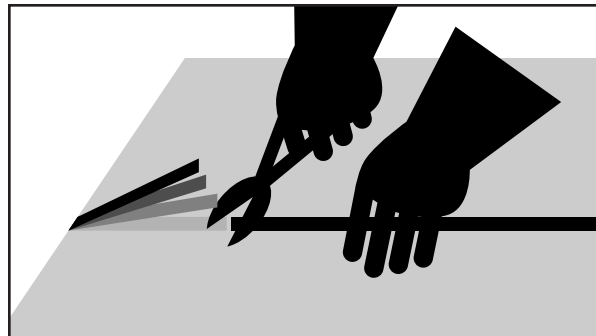
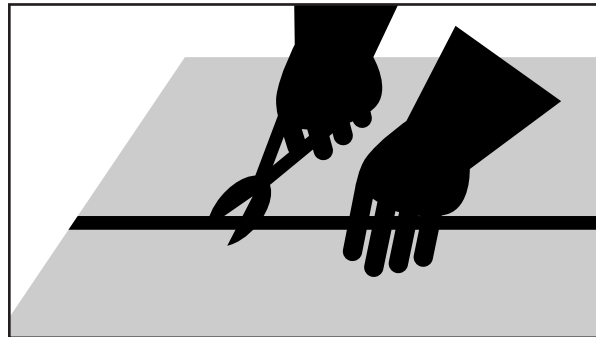
The strapping will rebound downward - away from you. This will help prevent personal injury. Other people should remain at a safe distance.



When cutting\* horizontally tensioned strapping, stand against the package, and cut to the right of the hold.

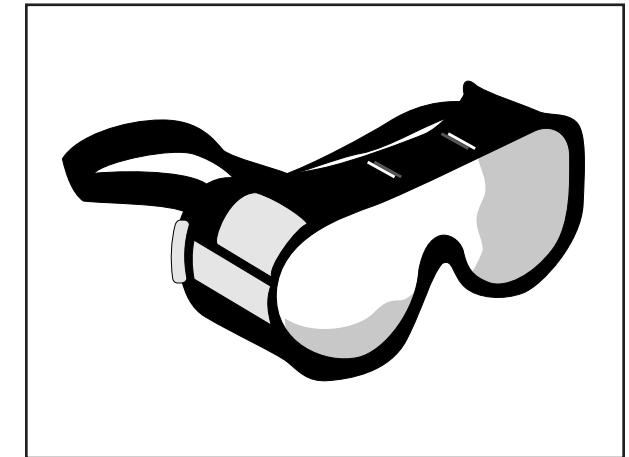
The strapping will rebound to the right - away from you. This will help prevent personal injury. Other people should remain at a safe distance.

\* Refer to the strap cutter's Operation & Safety Manual for proper two-handed strap cutting procedures and safety instructions.



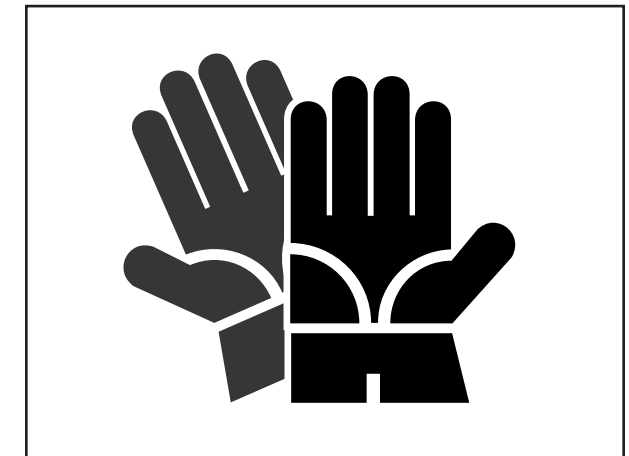
### Wear safety glasses

Operators and bystanders must always wear safety glasses with side shields (safety glasses must conform to ANSI Standard Z-87.1 or EN 166)



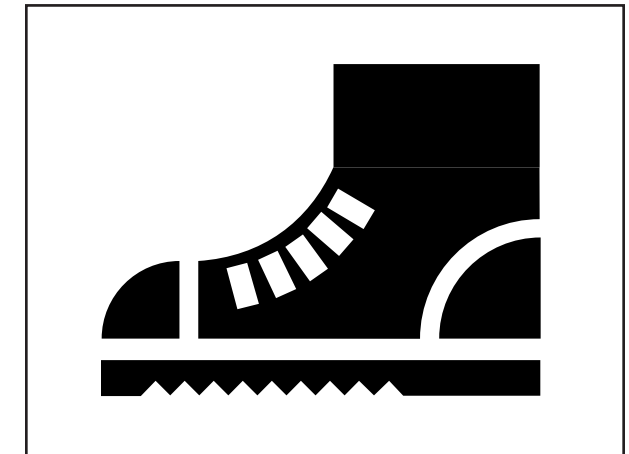
### Wear gloves

Wear protective gloves when handling strapping.



### Wear safety shoes

Wear steel-reinforced safety shoes to help protect your feet from injury.



### Operate tools using trained personnel

Only trained personnel should operate Samuel hand tool products. The tool's manual provides safe operating and maintenance procedures. If you have any questions regarding training, contact your Samuel Sales Representative.

### Never modify any tool

Do not lengthen the handle of any tool with a pipe or other device. The extension may appear to be an advantage, but can make the tool unsafe.



### Never use strapping improperly

Strapping is only used to secure a load. Never use strapping as a handle, lifting device or method of pulling a load or package.



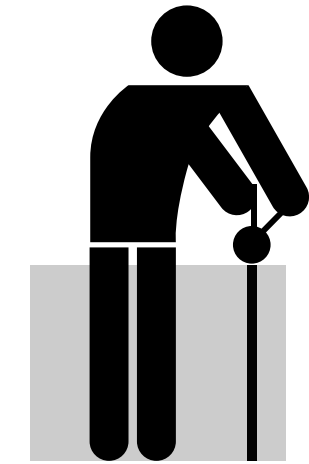
### Never nail strapping

Never drive nails or staples through strapping. A dangerous ricochet could occur or the strapping could be weakened. If the strapping must be nailed, use Samuel pre-punched strapping.



### Stand to one side when tensioning

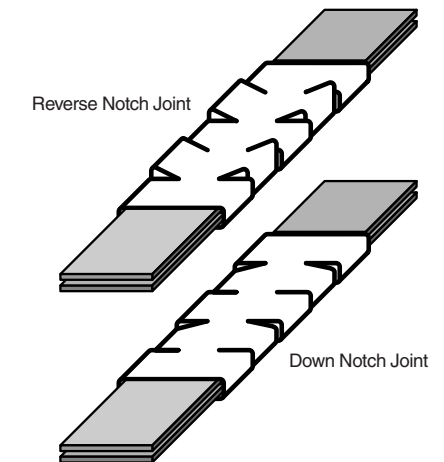
Position yourself to one side while tensioning strapping. If the strap breaks, slips in the tool, or disengages, you won't be in the direct line of recoiling strap.



### Inspect the joint

The most commonly used joints are down and reverse notch as shown\*. If the joint does not appear as shown, remove the strapping, review the tool's operating instructions, and apply a new strap. If the joint is still improperly formed, inspect the tool for worn or damaged parts. Replace parts as needed. Never handle or ship a load with improperly formed joints – improperly formed joints may not secure a load and can cause serious injury.

\* For information regarding other joint types (i.e., crimped, sealless, heat seal, etc.) contact your Samuel Sales Representative.



### Always use strap cutters

Use only cutters specifically designed for strap cutting. Claw hammers, crow bars, chisels and axes will cause tensioned strapping to hazardously fly apart.

